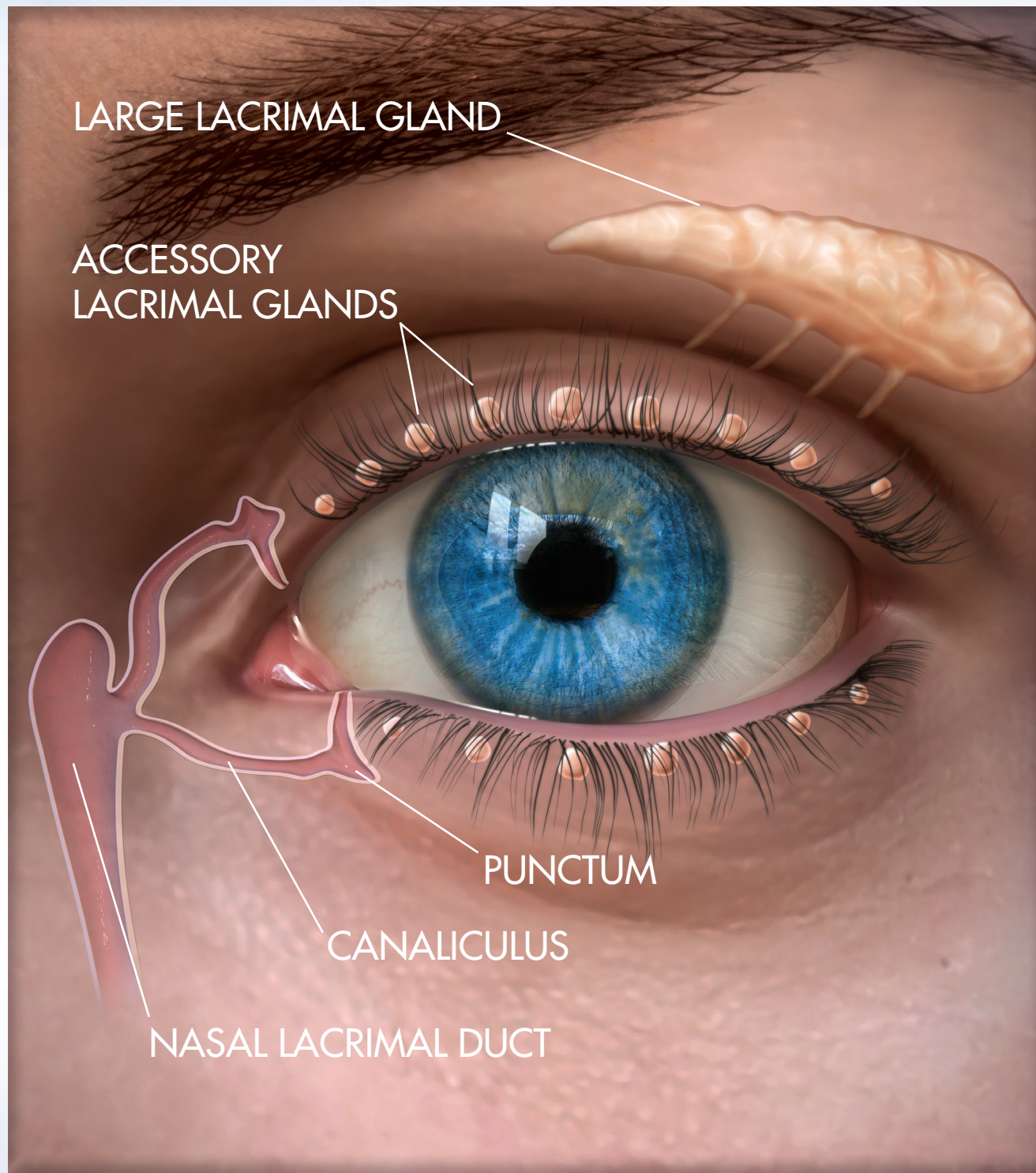


PUNCTAL OCCLUSION FOR DRY EYE

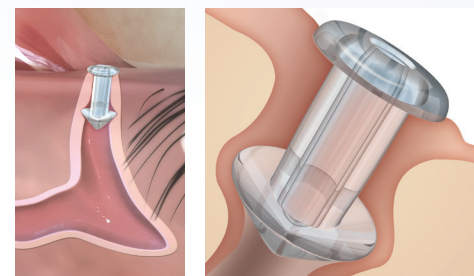
Dry Eye Syndrome is a common condition where your eyes may feel dry, gritty, scratchy, itchy, burning or even feel watery. There are different treatments for Dry Eye depending on the cause. Punctal plugs are a dry eye treatment that can be used alone or in combination with a high grade lubricant drop like Oasis TEARS.

Ask your doctor what treatment is best for your condition.



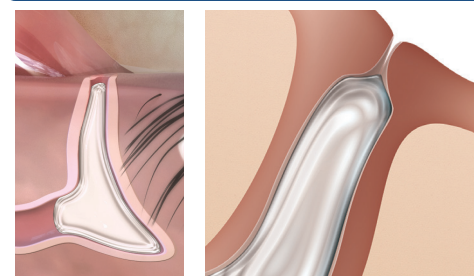
SOFT PLUG® Silicone Punctum Plugs

LONG TERM COMFORT, GREAT RETENTION



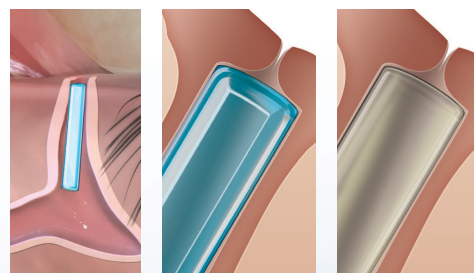
FORM FIT® Hydrogel Intracanalicular Plugs

ONE SIZE SOLUTION



SOFT PLUG® Collagen & Extended Duration Plugs

TEMPORARY ABSORBABLE TREATMENT



For Long-Lasting Dry Eye Relief,
Ask Your Doctor About

Oasis TEARS®

